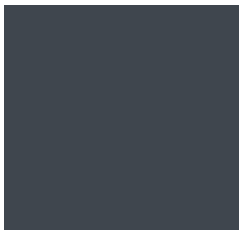


## Colour Surface Hardener (CSH) Colours



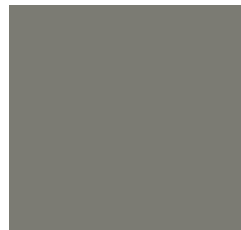
**CHARCOAL**  
CM314



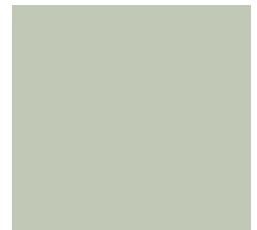
**SLATE GREY**  
CM348



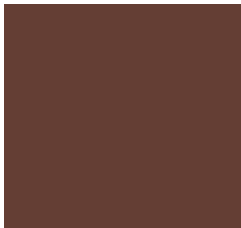
**STEEL GREY**  
CM351



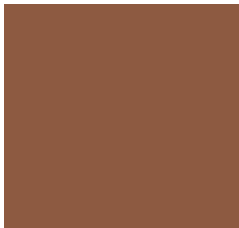
**PLATINUM GREY**  
CM336



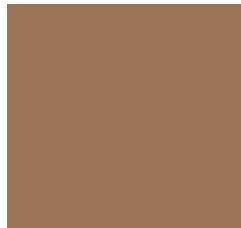
**SILVER GREY**  
CM341



**MAHOGANY**  
CM313



**DEEP TAN**  
CM316



**TUDOR BROWN**  
CM311



**RUSTIC SANDSTONE**  
CM308



**BIDEFORD BUFF**  
CM317



**AVON STONE**  
CM357



**PURBECK STONE**  
CM306



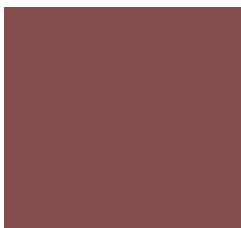
**BISCUIT**  
CM334



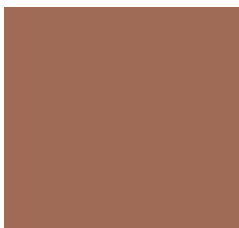
**SANDSTONE BUFF**  
CM321



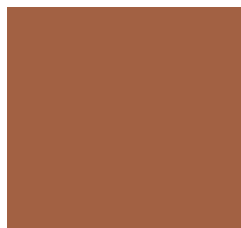
**DEEP RED**  
CM307



**PLUM**  
CM301



**TERRACOTTA**  
CM320



**BRICK RED**  
CM315



**CHAMPAGNE PINK**  
CM335



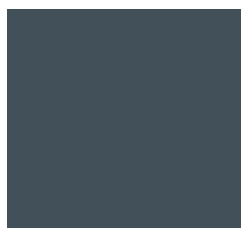
**SLATE GREEN**  
CM343



**STEADMAN BUFF**  
CM344



**LAWN GREEN**  
CM302



**SLATE BLUE**  
CM310



**POOL BLUE**  
CM325



**DOVE GREY**  
CM338

*Imprinted in-situ concrete paving*

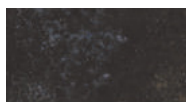
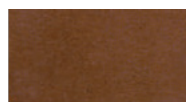
*Colour hardened concrete*

## PICS Antique Release Agent (RA) Colours

**Charcoal CM56****Classic Grey CM57****Platinum Grey CM59****Mahogany CM55****Chocolate CM58****Tan CM69****Beige CM70****Tile Red CM45****Slate Green CM52****Plum CM51****Walnut CM75****Golden Brown CM53**

PICS RA colours are designed to complement PICS CSH colours when used in the PICSPAVE process. All of PICS RA colours are UV stable and consistent from batch to batch. Custom colours available.

## PICSTAIN Colours

**Typical Grey Concrete****Fern F5****Aqua Blue A5****Chestnut C5****Deep Green DG5****Bronze B5****Mahogany M5****Terracotta T5****Burnt Orange BO5****Seal Brown SB5**

PICSTAIN is a blend of mineral salts in a mildly acidic solution which, when applied to concrete surfaces, react with free lime to form permanent coloured surfaces without risk of peeling or flaking. PLEASE NOTE: The grey base colour is a typical concrete colour which, when stained produces the nine PICSTAIN colours as shown. Variances in the base colour will change resulting colour effects.

## Silicone Joint Filler Colours

**Black CM97****Rustic Red CM91****Brown CM92****Grey CM93****Buff CM94****Portland CM95****Anthracite CM98****Clear CM99**

Jointing Filler is used to fill saw cut joints to inhibit weed growth and prevent small stones or foreign objects lodging in the joint.