



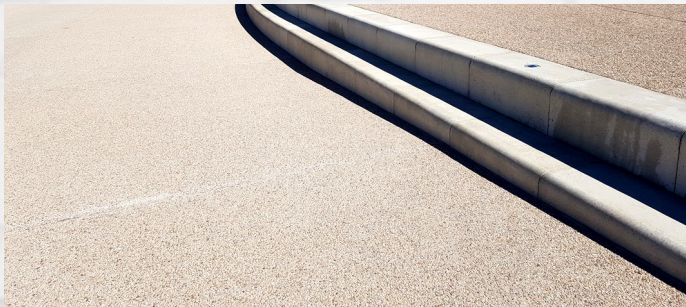
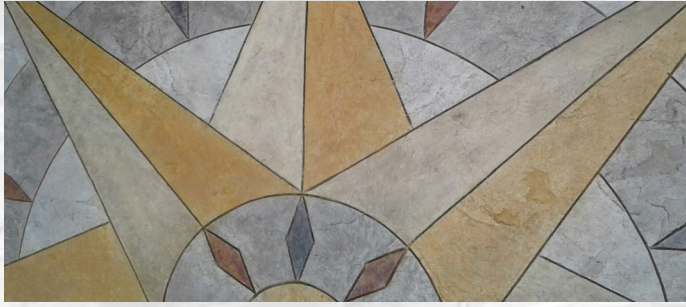
**PICS**

[www.picsuk.com](http://www.picsuk.com)

PRODUCT GUIDE  
Architectural Paving Systems



# 2 Company Profile



PICS offer paving and walling contractors the largest range of tools, products and services in the UK.

Our comprehensive training packages are available for all our systems and are tailored to suit every type of business, regardless of size and include both theory and practical on-site installations.

The PICS range of paving and walling systems are widely specified by Commercial Clients, Architects and Landscape Designers both here in the UK and overseas. In addition, the general public are served through our large network of established quality installers and depots.

From our head office in Newbury, we design and distribute our own manufactured products across the UK. Our depots in Newbury, Sheffield and Manchester provide invaluable support and availability of products stocked locally for collection or delivery.



[www.picsuk.com](http://www.picsuk.com)

**NEWBURY DEPOT**  
Unit 2  
Red Shute Hill Ind. Est.  
Hermitage  
Newbury  
RG18 9QL  
Tel: 01635 202224  
sales@picsuk.com

**SHEFFIELD DEPOT**  
Unit 4  
Redwood Court, Campbell Way  
Dinnington  
Sheffield  
S25 3NQ  
Tel: 01909 568189  
pics.sheffield@picsuk.com

**MANCHESTER DEPOT**  
Unit 7  
Wharfside Business Park  
Irlam Wharf Road, Irlam  
Manchester  
M44 5PN  
Tel: 0161 775 7412  
pics.manchester@picsuk.com



**ACID**  
**Acid Wash 25ltr**  
 For achieving uniformity of secondary colour removal.



**CM48A / CM48**  
**Xylene Cleaning Solvent / Thinners 25ltr / 5ltr**  
 For cleaning out sprayer units, cleaning spillages & stripping very small areas of sealer & colour washing.



**ASA**  
**Rhino Grip**  
 Anti-slip agent for use with PICS sealers.



**CM48B**  
**Picstrip 25ltr**  
 Heavy duty sealer stripping agent.



**CM20**  
**Monofilament Fibres 0.6kg**

- 6mm fibres
- 1 bag per m<sup>3</sup> of concrete
- Reduces surface bleed water
- Reduces surface drying / shrinkage



**CM482B / CM482A**  
**PICS Bloom 25ltr / 5ltr**  
 Removes blooming or other whitening from solvent based acrylic sealers.



**CM90AN - CM90TER**  
**Joint Filler**  
 Low modulus silicone for filling the top of control joints - colours that suit PICS colour surface hardeners. (For our full range of colours, please see PICS colour chart)



**LIQRELAG25**  
**Liquid Release Agent 25ltr**  
 For internal projects where powdered release agent is not suitable.



**CMRET18BLUE**  
**Retarder Blue 18ltr 2mm**  
 Enables 2mm surface retardation on the exposed surfaces of concrete.



**RELWAS**  
**Release Agent Wash 25ltr**  
 To ease removal of release agent and to obtain a uniform secondary colour effect.



**CMRET18ORAN**  
**Retarder Orange 18ltr 3mm**  
 Enables 3mm surface retardation on the exposed surfaces of concrete.



**WALLGEL**  
**Wall Gel 10kg**  
 Brush on protection for brickwork, areas in contact with concrete coloured products. Covers approx. 22m<sup>2</sup>.



<b>PICS MARKETING</b>	<b>Page 4</b>
<b>PATTERN IMPRINTED CONCRETE (PICSPAVE)</b>	<b>Pages 5 - 10</b>
<b>PICS GENERAL SITE ANCILLARIES</b>	<b>Page 11</b>
<b>PICS TOOLS</b>	<b>Pages 12-22</b>
<b>CONCRETE TRANSFORMATION (PICSTAIN)</b>	<b>Page 23</b>
<b>BLOCK PAVING AND DRIVEWAY REFURBISHMENT</b>	<b>Pages 24-25</b>
<b>TARMAC REFURBISHMENT (PICSCOAT)</b>	<b>Pages 26-27</b>
<b>WALLS (WALLCRETE)</b>	<b>Pages 28-30</b>

## PICSPAVE

### PPS Pattern Sample Board

Individually made to order samples which enable your client to see what a specific pattern would look like in their choice of colour surface hardener and release agent.



### CSHCASELARGE / CSHCASESMALL Colour Sample Case Large / Small

A professional set of colour chips using colour surface hardener, release agent and sealer. To display finishes, in an attractive presentation case.



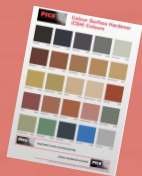
### CUSTOMBRO Company Brochure

Professionally designed brochure that can be customised with your branding to create a unique company portfolio.



### COLCHART Colour Chart

Displays our standard colour surface hardener range. For non-standard colour, or to match alternative colours, please contact our sales team.



## PICSEAL & DRIVEWAY REFURBISHMENT

### PSBLOCK1 Single Brick Display Board

1 brick sample, which enables your client to see a sealed and unsealed finish and stabilised jointing sand.



### PSA5LEAFLET Picseal Canvassing Leaflet A5

- Reply card incorporated
- Ideal for mail drops
- Can be personalised for your company



## PICSCOAT

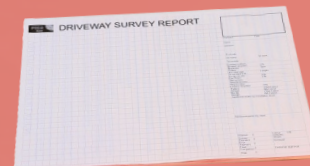
### PCA5AGENT Piccoat Canvassing Leaflet A5

- Reply card incorporated
- Ideal for mail drops
- Can be personalised for your company



### QUO1 Survey Report Pad

To record all site survey information and present your quotation in a professional manner.



### MKSIGN Project Signboard

Personalised company sign boards to your design, using your company logo. For display at all of your projects.

- Pack of 20



### PICBRO PICSPAVE Brochure

Professionally designed to showcase PICSPAVE applications.



### SUNNS Project Name Stamp

Perfect for personalising your installations, and gaining more enquiries. The best value advertising there is.



## PICSTAIN

### STAINBOARD Sample Board

Displays the finish in the range of acid stain colours.



## WALLCRETE

### WALLCRETESAMP Pattern Sample Board

Individually made to order samples, which enables you to show your client patterns or colours of your choosing.



### WALLA5 Wallcrete Canvassing Leaflet A5

- Reply card incorporated
- Ideal for mail drops
- Can be personalised for your company



### CM301 - CM357

#### Colour Surface Hardener 25kg

Coloured dry shake topping for all pattern imprinted concrete and decorative concrete installations. Used to harden and colour the surface. (For our full range of colours, please see PICS colour chart below)



### CM44A - CM44SBUFF

#### Colour Tints

Dry powder for use when colour washing, achieving uniformity & antiquing. (For full range of colour see PICS colour chart below)



### CRC301 - CRC357

#### PICSCHIP Chip / Crack Repair Compound

Designed for repairing small chips, holes, openings & fissures in concrete.

- Fast setting
- In a range of colours (For our full range of colours, please see PICS colour chart below)



CHARCOAL



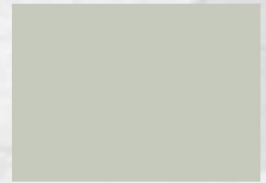
SLATE GREY



STEEL GREY



PLATINUM GREY



SILVER GREY



MAHOGANY



DEEP TAN



TUDOR BROWN



RUSTIC SANDSTONE



BIDEFORD BUFF



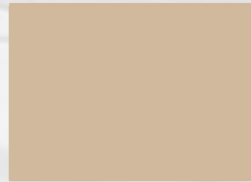
AVON STONE



PURBECK STONE



BISCUIT



SANDSTONE BUFF



DEEP RED



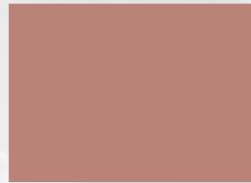
PLUM



TERRACOTTA



BRICK RED



CHAMPAGNE PINK



SLATE GREEN



STEADMAN BUFF



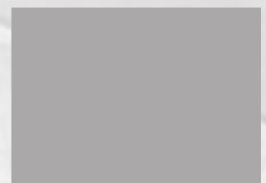
LAWN GREEN



SLATE BLUE



POOL BLUE



DOVE GREY

**CM51 - CM75****Antique Release Agent 10kg**

Available in various colours. Powdered release agent to prevent imprinting mats sticking to the concrete and for producing a secondary antiqued effect. (For our full range of colours, please see PICS colour chart below)

**PICS Antique Release Agent (RA) Colours***Charcoal CM56**Classic Grey CM57**Platinum Grey CM59**Mahogany CM55**Chocolate CM58**Tan CM69**Beige CM70**Walnut CM75**Slate Green CM52**Plum CM51***CM41****High Solid Sealer (HSS) 25ltr**

Used throughout the industry for sealing pattern imprinted concrete and decorative concrete installations.

**CM39****Matt Sealer 25ltr**

A matt equivalent to high solid sealer.

**CM40****Xtraseal 25ltr**

More viscous than high solid sealer, useful in cold weather or on porous concrete.

**CM42****Low Solid Sealer (LSS) 25ltr**

A low solid equivalent of high solid sealer. Especially useful for resealing and hot weather conditions.

**CM36****Custom Seal 25ltr**

Custom seal is a more viscous alternative to xtraseal and is ideal for use in cold conditions.

**PICS**

PAVE

**PICS**

ANCILLARIES

**CM61****Polythene - 25mu gauge**

Covers 800m<sup>2</sup> of sub-base membrane / garden. Ideal for weather protection.

**HT528****Smiths Handheld Sprayer 1.5Ltr**

Viton seals equipped. Ergonomic handle design for maximum comfort. This smaller sprayer works well for tight coverage and spot treatments.

**CM100****Expansion Joint Material**

Easy to use foam joint material on a roll. For isolation and expansion joints.

**HT524****Smiths Sprayer 3.5 Gallon**

Viton seals equipped. Industrial grade sprayer.

**FUNNEL****Heavy Duty Funnel**

For ease of filling sprayer units & avoiding spillages.

**HT527****Smiths Sprayer 2 Gallon**

General purpose light use sprayer. Ideal for homeowners.

**HT512****Joint Filler Applicator Gun**

Ideal for applying joint filler into control joints.

**HT529****3 Gallon Concrete Sprayer**

Economic, robust and versatile handheld pump sprayer. 24 inch brass wand which makes it ideal for treating hard to reach areas.

**HT510HC****Crusader Wheelbarrow**

Heavy duty contractor grade wheelbarrow for ease of placing and moving concrete.

**HT525****Smiths Water Supply Tank 3 Gallon**

Ideal for dust suppression when cutting expansion joints and other materials.

**HT520****10ltr Gloria Sprayer Unit**

Heavy duty sprayer. Viton seals equipped. All-round unit for sealer application.

**HT526****Smiths Acid Sprayer 2 Gallon**

Ideal for acid spraying, contains no metal components.

**HT5PL12****Industry 12ltr Sprayer Unit**

Viton seals equipped. All-round unit for sealer application.

**HT533****Smiths Contractor Sprayer 2 Gallon**

Viton seals equipped. Multiple use mid-range sprayer.





**CM62  
Shuttering Pins**

- 10mm x 300mm long
- Mild steel pins to retain shuttering



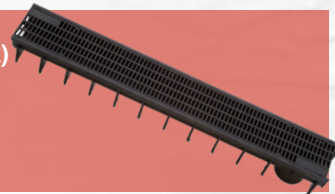
**CM116  
Aco Hex Drain (Shallow) 1 Metre**

Lightweight, shallow, plastic unit with plastic grating.



**CM81B  
Strip Drainage Channel (Black)**

Lightweight plastic unit with plastic grating.



**CM117  
Aco Hex Drain Corner Unit**

Turns drainage 90° or 270°.



**CM65  
Inset Manhole Cover**

650mm x 450mm x 46mm recessed trays with integral lifting points. Ideal for PIC projects.



**CM118  
Aco Hex Drain Leaf Trap**

Filter to prevent leaves and debris from entering into the drainage system. (Including 2 end caps)



**CM73  
Inset Manhole Cover**

300mm x 300mm x 46mm recessed trays for inspection chambers. (For imprinted concrete)



**CM106  
Plastic Shuttering**

95mm shuttering. 5 metres in length.



**CM73A  
Inset Manhole Cover**

450mm x 450mm x 46mm recessed trays for inspection chambers. (For imprinted concrete)



**CM86A  
Deck Drainage Channel**

Preformed plastic drainage channel, 2 metres in length.



# 10 PICSPAVE Site Preparation

**CM102**

**Square Inlet Hopper**

Allows rainwater and waste pipes to be connected to drainage systems.



**CM111A**

**Underground Rodding Eye**

Durable and impact resistant. Lightweight and easy to fit system.



**CM102A**

**Square Inlet Hopper Grid**

Grid only.



**CM112**

**45° Single Socket Bend**

Durable PVC with rubber seal for push-fit installation.



**CM103**

**Rectangle Inlet Hopper**

Allows rainwater and waste pipes to be connected to drainage systems.



**CM113**

**15° Double Socket Bend**

Durable PVC with rubber seal for push-fit installation.



**CM104**

**Underground 90° Bend**

Durable PVC with rubber seals for push-fit installation.



**CM114**

**30° Double Socket Bend**

Durable PVC with rubber seal for push-fit installation.



**CM107**

**Underground Straight Connector**

Durable PVC with rubber seals for push-fit installation.



**CM115**

**45° Double Socket Bend**

Durable PVC with rubber seal for push-fit installation.



**CM108**

**Underground Tee**

Pipe Junctions / Branches are used to bring two runs of underground drainage pipe together. Durable PVC with rubber seals for push-fit installation.



**CM89A**

**Low Back P Trap With Feet**

Use in conjunction with gully hoppers to allow rainwater and waste pipe to enter the drainage system.



**CM105**

**Underground Pipe 3m Long**

Multi-use PVC underground pipe with 110mm diameter.



**CM110**

**Underground Plastic To Pot Connector**

For joining non-pressure pipes of differing outer diameters and materials. Simply screw to tighten or loosen grip of pipe.



**PICS**

PAVE

**PICS**

ANCILLARIES

## DTAPE

### Barrier Tape

500m red & white danger tape to protect concrete from public access.



## GLBNXL/GLBNL

### Classic Blue Nitrile Gloves XL/L

Basic protection gloves. (Box of 100)



## DUCTTA Duct Tape

Heavy duty adhesive for securing polythene and other coverings.



## GLONXL/GLONL

### Orange Nitrile Gloves Ideal Grip XL/L

Premium protective gloves. 3 times thicker than classic gloves. Diamond texture ensures a secure grip when required. (Box of 50)



## PBBUCK

### Black Builders Bucket

3 gallon bucket.



## HCLEAN

### Lime Beaded Hand Cleaner 3ltr

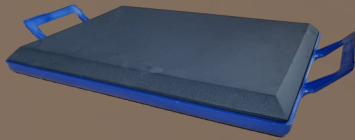
Heavy duty hand cleanser for effective cleaning action. Incorporating naturally sourced corncob grit for enhanced cleaning properties.



## HT069

### Kneeling Board

Light, robust pads for access across concrete with minimal retrowelling.



## HCLEANCAGE

### Hand Cleaner Cage

Holder allows hand cleaner to be fixed to walls. Suitable for use with 'HCLEAN'.



## HT069WS

### Kneeling Board With Stand

Heavy duty stand allows for maximum standing access across concrete.



## HCLEANPUMP

### Hand Cleaner Pump

Reusable plastic pump for use with 'HCLEAN'.



## HT410

### Plastic Safety Goggles

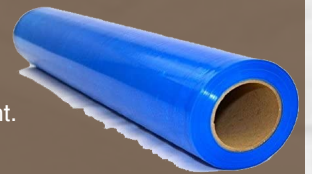
Protection for eyes against dust for example, when applying colour surface hardener & release agent.



## FILM

### Window Protection Film

500mm x 100m. Protects window sills from dirty hand prints, colour surface hardener and release agent.



## HT435

### Dust Filter Masks

Protection against dust particles when applying colour surface hardener & release agent. (Box of 50)



## PRIMERPS / PRIMERPS15

### PICS Primer Pro Slurry 25kg / 15kg

To seal, prime and bond natural stone, porcelain, paving slabs and other paving materials to the new bed, while installing new paved areas.



**PICS**

ANCILLARIES

**PICS**

PAVE

# 12 PICS Steel Pool Trowels

**HT2285**

**Blue Steel Pool Trowel 16" x 4"**  
Round front and square backed carbon trowel. For quality finishing without trowel marks.



**HT4435**

**Blue Steel Pool Trowel 10" x 3"**  
Carbon pool trowel. Ideal for small areas and contracting colour borders.



**HT279**

**Blue Steel Pool Trowel 16" x 4"**  
Round ended hand trowel for quality steel finishing without trowel marks.



**HT296**

**Blue Steel Pool Trowel 24" x 5"**  
Round ended hand trowel for quality steel finishing without trowel marks.



**HT279BPF**

**Blue Steel Pool Trowel 16" x 4"**  
Round ended hand trowel for quality steel finishing without trowel marks. (With Proform handle)



**HT213B**

**10" x 4" Blue Steel Pool Trowel**  
Round front square backed trowel. For quality steel finishing without trowel marks.



**HT288**

**Blue Steel Pool Trowel 20" x 5"**  
Round front and square backed carbon trowel. For quality finishing without trowel marks.



**HT733B**

**Blue Steel Trowel 18" x 5"**  
Square end trowel for quality steel finishing.



**HT295**

**Blue Steel Pool Trowel 20" x 5"**  
Round ended hand trowel for quality steel finishing without trowel marks.



**HT222K**

**Carbon Steel Cement Trowel**  
16" x 4" Carbon steel trowel for quality steel finishing.



**HT295BPF**

**Blue Steel Pool Trowel 20" x 5"**  
Round ended hand trowel for quality steel finishing without trowel marks. (With Proform handle)



**HT738BK**

**18" x 4" Elite Pool Trowel**  
For quality steel finishing without trowel marks. (With cork handle)



**HT738B**

**Blue Steel Pool Trowel 18" x 4"**  
Round ended hand trowel for quality steel finishing without trowel marks.



**HT658**

**Pool Trowel Camel Bracket**  
Used to attach a pool trowel to button handles.



## CUTBAR

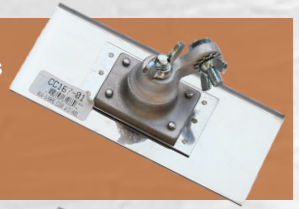
### Cutting Bar 24" x 4"

Quicker than a hammer and bolster.  
For soft cuts along straight pattern lines.



## HT167A

Walking Edger 8" x 4"  $\frac{3}{8}$ " Radius  
(Edger handle and adaptors to be purchased separately)



## HT125 Mini Edger

For radius edges on tight curves.



## HT167B

Walking Edger 10" x 10"  
(Edger handle and adaptors to be purchased separately)



## HT128

Edging Trowel 6" x 3"  $\frac{1}{4}$ " Radius  
Fluted radius edger with flared ends for ease of use.



## HT332

### Handle Adaptor

To use with groovers and camel brackets.



## HT169

Edging Trowel 8" x 5"  $\frac{1}{8}$ " Radius  
Flat radius edger. Stainless steel blade moves smoothly along edges of concrete sidewalks and slabs.



## HT277

Walking Groover 8" x 8"  $1\frac{1}{2}$ " Bit  
For cutting control joints when concrete is still soft.



## HT129

Edging Trowel 8" x 4"  $\frac{3}{8}$ " Radius  
Flat radius edger. Stainless steel blade moves smoothly along edges of concrete sidewalks and slabs.



## HT360

Bronze Edger 9" x 4"  $\frac{1}{4}$ " Radius  
Durable edger for plain concrete and floating colour hardener into concrete edges.



## HT168

Edging Trowel 8" x 4"  $\frac{1}{4}$ " radius  
Flat radius edger. Stainless steel blade moves smoothly along edges of concrete sidewalks and slabs.



# 14 PICS Edgers

## HT600

### Stainless Steel Edger

12" x 5" edger  $\frac{3}{8}$ " radius with  $\frac{3}{4}$ " bit adjustable groover.



## HT314

### Hand Groover

6" x 4" by 1" deep x  $\frac{1}{2}$ " wide. 100% bronze, cuts smooth clean grooves. (With smooth wooden handle)



## HT607

### Stainless Steel Edger

12" x 5" edger  $\frac{3}{8}$ " radius with  $\frac{1}{2}$ " bit adjustable groover.



## HT303

### Bronze Groover

6" x 3" by  $\frac{1}{2}$ " deep x  $\frac{3}{8}$ " wide. 100% bronze, cuts smooth clean grooves. (With smooth wooden handle)



## HT167

### Edging Trowel

8" x 4" edger  $\frac{3}{8}$ " radius.



## HT386

### Wooden Pole

This 5' quality wooden handle features a bronze clevis. The bronze clevis provides a tight grip to clevis brackets. The clevis is attached to the smooth hardwood handle with a steel ferrule. Use with fresnos and walking tools such as curb tools, edgers and groovers.



## HT173K

### Edging Trowel

6" x 4" edger  $\frac{3}{8}$ " radius. (Elite edger with cork handle) Stainless steel blade moves smoothly along edges of concrete sidewalks and slabs.



## HT299

### Groover Handle 6"

Handheld groover adapter. This short handle attaches to long-handled tools to convert them to hand tools for use in tight spaces.



## HT574K

### Elite Edger

6" x 6" edger  $\frac{1}{2}$ " Radius. (With Cork handle) Stainless steel blade moves smoothly along edges of concrete sidewalks and slabs.



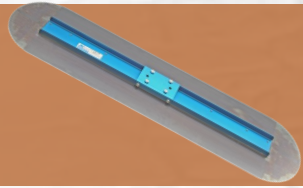
**PICS**

TOOLS

**HT750**

**Bulltrowel 4'**

For fast finish trowelling of large areas of concrete.



**HT796**

**Knucklehead Tilt Float Button Bracket**

This double tilt action button float bracket attaches to fresnos and both 2 hole and 4 hole bull floats. Use with 1 3/8" or 1 3/4" button bull float handles or adapters. Fits 2- or 4-hole bull floats.



**HT755**

**Bull Trowel Weights**

Weights provide extra pressure to improve the ease of trowelling.



**HT911**

**Fresno Trowel Weights**

These weights provide extra pressure to improve the ease of trowelling.



**HT270**

**Orbiter Tilt Bracket**

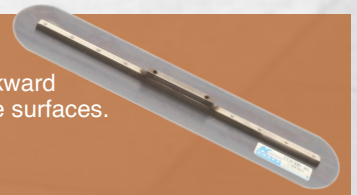
The orbiter double tilt action button float bracket attaches to fresnos and 2-hole and 4-hole bull floats. The bracket is made of rugged, yet lightweight aluminium for durability.



**HT820**

**Fresno Trowel 24" x 5"**

Quality finishing trowel for awkward smaller areas or drier concrete surfaces.



**HT294**

**Easy Tilt Bracket**

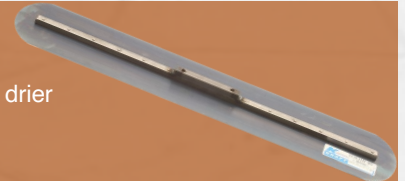
This double tilt action button float bracket attaches to fresnos or bull floats. Fits 2 or 4 hole bull floats.



**HT821**

**Fresno Trowel 30" x 5"**

Quality finishing trowel for awkward smaller areas or drier concrete surfaces.



**HT760**

**Tilt Bracket**

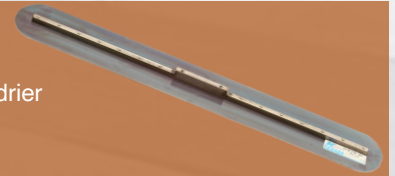
The easy tilt double tilt action button float bracket attaches to fresnos or bull floats. Fits 2 hole bull floats.



**HT822**

**Fresno Trowel 36" x 5"**

Quality finishing trowel for awkward smaller areas or drier concrete surfaces.

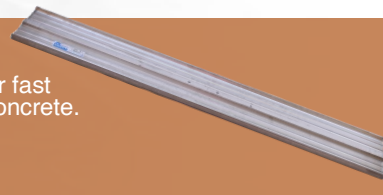


# 16 PICS Magnesium Floats

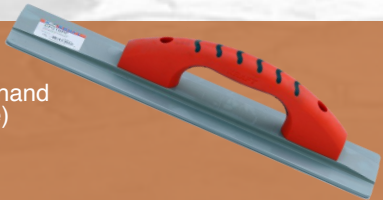
**HT016**  
**Mag Float 16" x 3"**  
Hard wearing magnesium hand float.



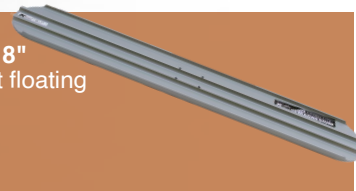
**HT802**  
**Magnesium Bull Float 4'**  
Square ended bull float, for fast floating of large areas of concrete.



**HT016PF**  
**Mag Float 16" x 3"**  
Hard wearing magnesium hand float. (With Proform handle)



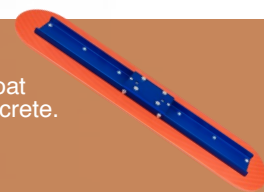
**HT803**  
**Magnesium Bull Float 48" x 8"**  
Round ended bull float for fast floating of large areas of concrete.



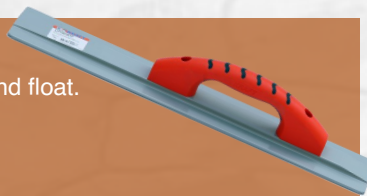
**HT020**  
**Mag Float 20" x 3"**  
Hard wearing magnesium hand float.



**HT2020RE**  
**36" Orange Thunder Bull Float**  
Round ended orange thunder bull float for fast floating of large areas of concrete.



**HT020PF**  
**Mag Float 20" x 3"**  
Hard wearing magnesium hand float. (With Proform handle)



**HT942**  
**Magnesium Bull Float Groover**  
Bronze tool for use in conjunction with Bull float to install soft joints.



**HT076**  
**Mag Float 16" x 3"**  
Round ended, hard wearing magnesium hand float.



**HT2016PF**  
**16" x 3" Mag Float**  
Orange thunder mag float. (With Proform Handle)



**HT064K**  
**Elite Mag Float**  
Square ended, hard wearing magnesium hand float. (With cork handle)



**HT-GF10802H**  
**16" x 3" Hand Float**  
Gator guide hand float. (With holster)



**HT663PF**  
**Mini Mag Float 7 1/2" x 3 1/4"**  
Hard wearing magnesium hand float ideal for small areas. (With Proform handle)





**HT110H**

**Cobble Hand Tool H**

Specialist range of pattern compatible hand tools for all areas.



**HT1131**

**Stone Hand Tool 1"**

Specialist range of pattern compatible hand tools for all areas.



**HT110T**

**Cobble Hand Tool T**

Specialist range of pattern compatible hand tools for all areas.



**HT1134**

**Stone Hand Tool 4"**

Specialist range of pattern compatible hand tools for all areas.



**HT111A**

**G Tool**

Resin cobble edging tool.



**HT1138**

**Stone Hand Tool 8"**

Specialist range of pattern compatible hand tools for all areas.



**HT1121**

**Brick Hand Tool 1"**

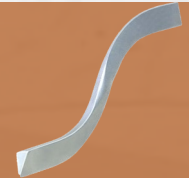
Specialist range of pattern compatible hand tools for all areas.



**HT112**

**Double end "V" Jointer**

$\frac{5}{8}$ " x  $\frac{3}{4}$ " multi-purpose jointing tool.



**HT1124**

**Brick Hand Tool 4"**

Specialist range of pattern compatible hand tools for all areas.



**HT116/4**

**4" Alum Chisel**

Specialist range of pattern compatible hand tools for all areas.



**HT1128**

**Brick Hand Tool 8"**

Specialist range of pattern compatible hand tools for all areas.



**HT117/8**

**8" Alum Chisel**

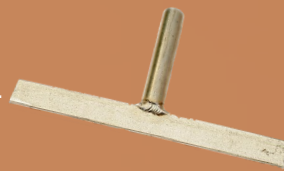
Specialist range of pattern compatible hand tools for all areas.



**HT11212**

**Brick Hand Tool 12"**

Specialist range of pattern compatible hand tools for all areas.



**HT281**

**Rubbing Brick**

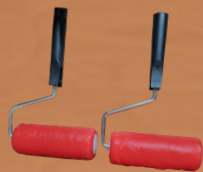
8" x 3" with handle. Ideal for rubbing down squeeze-ups.



# 18 PICS Hand Tools

## WR130-WR216 Textured Rollers

Range of textured rollers for application of texture where imprinting is difficult.



## SQW-3 Squeeze Up Wheel 3mm

Designed to fit 3mm imprinting mat joint sizes & remove squeeze-ups easily.



## HT116 Fluffy Touch Up Roller

Useful tool designed for small repair work and open fissures during printing.



## SQW6 Squeeze Up Wheel 6mm

Designed to fit 6mm imprinting mat joint sizes & remove squeeze-ups easily.



## HT119 Foam Touch Up Roller

Useful tool designed for small repair work and open fissures during printing.



## SQW9 Squeeze Up Wheel 9mm

Designed to fit 9mm imprinting mat joint sizes & remove squeeze-ups easily.



## HT271 Rubbing Jointer

Add depth to joints & correct imperfections while imprinting.



## SQW12 Squeeze Up Wheel 12mm

Designed to fit 12mm imprinting mat joint sizes & remove squeeze-ups easily.



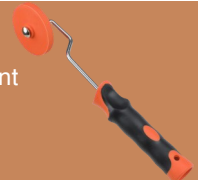
## HT986 Hammered Edge Wheel

To add a simple textured joint to the imprinting work.



## HT566 Touch Up Roller

Designed to fit a  $\frac{3}{16}$ " imprinting mat joint sizes & remove squeeze-ups easily.




## HT567 Touch Up Roller

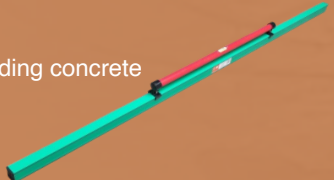
Designed to fit a  $\frac{3}{8}$ " imprinting mat joint sizes & remove squeeze-ups easily.



**HT988**  
**1.5m Aussie Screeder**  
 Small screed bar for screeding concrete into place.



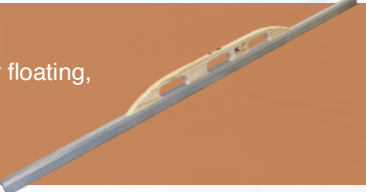
**HT989**  
**2.1m Aussie Screeder**  
 Medium screed bar for screeding concrete into place.



**HT990**  
**3m Aussie Screeder**  
 Large screed bar for screeding concrete into place.




**HT4221**  
**6' Buckaroo**  
 One man straight edge for floating, screeding, and striking off concrete.



**HT428L**  
**8' Buckaroo**  
 One man straight edge for floating, screeding, and striking off concrete.



**HT425A**  
**5' Whiskey level with handle.**  
 Float, screed, and level concrete slabs with this easy to use straight edge.



**HT289**  
**Thick Button Handle**

- 6' Length x 1<sup>3</sup>/<sub>4</sub>" diameter
- Universal clips for all tilt brackets




**HT336**  
**Slimline Button Handle**

- 6' Length x 1<sup>3</sup>/<sub>8</sub>" diameter
- Universal clips for all tilt brackets



**HT289-01**  
**Thick Button Handle Clips**  
 Spare clips suitable for all button handles.




**HT675**  
**Handle Adaptor**  
 To convert slimline button handles to standard button handles.




**HT946**  
**8" Roller Tamp**

- Fast tamping of placed concrete
- Raises fat and depresses the aggregate
- Ideal for smaller areas




**HT948B**  
**18" Roller Tamp**

- Fast tamping of placed concrete
- Raises fat and depresses the aggregate
- Ideal for smaller areas



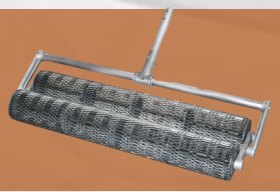
**HT952**  
**36" Roller Tamp**

- Fast tamping of placed concrete
- Raises fat and depresses the aggregate




**HT958**  
**48" Roller Tamp**

- Fast tamping of placed concrete
- Raises fat and depresses the aggregate



**HT952-03**  
**T-Clamp**  
 Replacement T-clamp for roller bugs.



**CSHSCOOP**

**Aluminium Scoop**

For easy application of colour surface hardener. Increased application coverage.



**HT107**

**Thick Rake Handle**

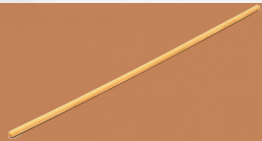
For use with 'HT009' & 'HT010' placer rakes.



**HT106**

**Thin Broom / Roller Handle**

For all soft sealing brooms.



**STURABRUSH**

**Stucco Release Agent Brush**

For the application of powder antique release agent.



**HT212B**

**12" Natural Bristle Sealing Broom**

Natural bristle head for applying sealer / working sealer into joints. Use with thin broom handle 'HT106'. (Not Included)



**HT104**

**10" Sealing Broom**

Coco bristle head for applying sealer / working sealer into joints. Use with thin broom handle 'HT106'. (Not included)



**HT556**

**24" Release Agent Sweeping Broom**

Pure bristle durable broom for removal of excess Release Agent. (Handle included)



**HT009**

**Specialist Concrete Rake (Steel)**

Lightweight rake designed for fast concrete placing. Use with thick rake handle 'HT107'. (Not included)



**HT010**

**Specialist Concrete Rake (Magnesium)**

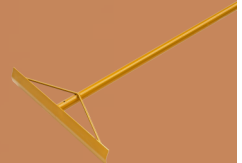
Lightweight rake with wider head and top-toothed edge. Use with thick rake handle 'HT107'. (Not included)



**HT012**

**Texas Placer Rake**

Strong lightweight aluminium rake with heavy duty braces for added strength.



**HT904AF**

**Concrete Spreader**

19 1/2" x 4" spreader. (With fibreglass handle)



**HT901**

**Concrete Spreader**

Lightweight spreader designed for fast placing of concrete.



**HT925**

**Imprinting Mat Impactor**

Ensures imprinting mats are tamped to desired depth.



**HT928**

**Heavy Duty Mat Impactor**

Large rubber coated tool. Ideal for use with alloy moulds.



**HTTAMP12**

**12" x 12" Imprinting Mat Impactor**

Proline, Heavy duty flexible tamp that ensures mats are tamped to desired depth.



**HT040**

**Diamond Blade GPX10**

Designed for use on all common types of building materials.



**HT259**

**48" Mag Brush**

Soft poly fibres on an aluminium base. Adapter bar allows the user to float and broom finish a slab all with one tool in one pass.



MAT DESIGNS	
Reclaimed Timber Plank 12" M-BW1237A - M-BW1275B	
Reclaimed Timber Plank 16" M-BW1668D - M-BW1696C	
Reclaimed Timber Plank 8" M-BW837A - M-BW875B	
Reclaimed Timber Plank Flexi 16" x 32" M-BWR16A	
Random 6" Wood Plank M170	
Random Wood Plank Super Flex 6' x 4' MSF180	
Pacific Boardwalk 12" M23A - M23F	
Wood Paver Runningbond M-BST7390	
Wood Paver Cobble M-BST7340	
Porcelain Stone 24" x 48" MP121	
Porcelain Stone 12" x 36" MP123	
Travertine M-AS1000A - M-AS1000C	
Farmhouse Stone M-AS1100A - M-AS1100C	
Split Rubblestone 31" x 31" MB113 - MY113	
Random Stone 30" x 30" MB6 - MY6	
Extra Large Random Stone 36" x 36" MB139 - MR139	
Garden Stone 36" x 36" M179	
Old Brick Basket Weave 17" x 34" MB8-MY8	
New Brick Basket Weave 16" x 33" M87	
Old Brick Runningbond 16" x 36" MB9 - MY9	
New Brick Herringbone M30	
Old Brick Herringbone 27" x 33" MB10 - MY10	
Herringbone Slate 8" x 16" MB11 - MY11	
Basket Weave Stone 24" x 24" M111	
La Paz Slate Octagon Stone 23" x 33" MB96 - MY96	
California Weave 24" x 24" MB7 - MR7	
Santa Barbara Tile 31" x 31" M69	
York Stone 1' M123 - M126	
York Stone 2' M121 - M124	
York Stone 3' M120	
European Fan 27" x 46" M1	
French Fan Cobblestone 27" x 46" M114	
Portugal Fan 27" x 46" M70	
Old Englysh Cobblestone 22" x 57" M43	
Deep Joint Slate Cobblestone 27" x 48" M83	
Belgian Cobble 17" x 69" M997	
London Cobblestone 17" x 29" M2	
Country Cobble 21" x 41" M998	

Lakeland Cobble 41" x 21" M999	
Old World Slate Cobblestone 27" x 48" M35	
Cut Stone Cobble M-CS350	
Random Ashlar Slate 24" x 24" MB5 - MY5	
Royal Ashlar 36" x 36" MB105 - MY105	
Random Ashlar Stone 24" x 24" MB112 - MY112	
Grand Ashlar Slate 36" x 36" MB115 - MY115	
Large Ashlar Slate MB85	
Extra Large Ashlar Slate 36" x 36" MBXL5 - MYXL5	
Rotating Ashlar Roman Slate M-AS500	
La Habra Ashlar Slate 36" x 36" MB143 - MR143	
La Habra Ashlar Slate 24" x 24" MB59 - MY59	
Appian Runningbond Cobble 52" x 41" M-SMP510	
Monetary Ashlar 52" x 52" M-SMP200A - M-SMP200B	
Carmel Bluestone Ashlar 52" M-SMP210A - M-SMP210B	
Opa Locka Stone 20" x 30" MR16 - MY16	
Yorkshire Fieldstone 36" x 64" MY996	
Bavarian Castle Stone 36" x 36" MB995 - MY995	
Italian Slate Runningbond 12" x 24" M27	
Slate Runningbond 6" x 6" M49	
Sidewalk Slate 18" x 36" MB17 - MY17	
Serpentine Slate 20" x 48" M36	
TEXTURED SKINS	
Blue Stone Skin 36" x 36" M-3BL	
Blue Stone Skin 20" x 20" M-2BL	
Belgium Slate Skin 36" x 36" M-3BE	
Belgium Slate Skin 20" x 20" M-2BE	
Blue Ridge Stone Skin 20" x 20" M-2BR	
Roman Slate Skin 20" x 20" M-2RS	
Caesar Stone (S,M,L) M127 - M133	
French Granite (S,M,L) M210 - M212	
Monster Slate (S,M,L) M199 - M138	
San Diego Slate (S,M,L) M216 - M218	
Shawnee Slate (S,M,L) M213 - M215	
Blue Stone (S,M,L) M219 - M221	
Arizona Sandstone (S,M,L) M116 - M129	
Wave Crete (S,M,L) M117 - M131	
Rock Salt / Coquina Stone (S,M) M158 - M177	

For our full range of patterned mats and borders, please see the PICS mat brochure.

**FEATURE MATS**

Windsor Stone Circle Inner 2'	M96
Windsor Circle Row 1 5'	M96A
Windsor Circle Row 2 8'	M96B
Windsor Circle Row 3 11'	M96C
Compass Circle 4'	M134
Pin Wheel Medallion 4'	M139
Round Cobblestone Star 4'	M136
Mariners Medallion 5'	M-MD7501
Flaming Sun	M135
Slate Cobblestone Circle 4'4"	M12
Slate Cobblestone Circle 9'	MR72
Slate Cobblestone Circle 14'	MB73
Slate Cobblestone Circle 19'	MY146

**BORDER MATS**

La Habra Slate Soldier Course 6" x 12"	M97
La Habra Slate Mitre 6" x 12"	M98
Slate Brick Radius 2' 4" x 8"	M37
Slate Brick 10' Radius 4" x 8"	M38
Slate Brick Mitre 4" x 8"	M39
Slate Soldier Course 4" x 8"	M20
Slate Soldier Course 7' Radius	MB75
Slate Tile Border 12" x 48"	M58
Serpentine Slate Border Tool 12" x 48"	M84
New Brick Mitre 4" x 8"	M55
New Brick Bed Course Single Grout 4" x 8"	M77
New Brick Bed Course Double Grout 4" x 8"	M78
New Brick Radius 2'	M53
New Brick Soldier Course	M31
New Brick 10' Radius	M51
Old Brick Radius 2'	M52
Old Brick Bed Course Double Grout 4" x 8"	M80
Old Brick Soldier Course 6" x 12"	M29
Old Brick Mitre	M54
Old Brick Bed Course Single Grout 4" x 8"	M79
Old Englysh Cobblestone Soldier Course 5" x 7.5"	M44
Old Englysh Cobblestone Mitre 4" x 8"	M45
Lakeland Cobble Bed Course 5" x 42"	M163
Lakeland Cobble Soldier Course 10" x 42"	M162
London Cobblestone Bed Course 6" x 29"	M168

9'6" Radius Slate Soldier Course	M147
7' Radius Slate Soldier Course	MB75
4'6" Radius Slate Soldier Course	MR74
California Weave With 4" x 4" Tile $\frac{1}{4}$ " Circle	M33
California Weave With 4" x 4" Tile Insert	M34
Stone Border 12" x 44"	M99
Classic Stone 9" x 35"	MB100 - MY100
Jerusalem Stone 12" x 48"	M205
Christian Tile Mitre	M988
Christian Tile Border 14" x 45"	M152
Daisy Garland Border Art	M884
Daisy Garland Corner Accent Border Art	M884A
Acanthus Leaf Border Art	M887

**SINGLE BRICK MATS**

Single Slate Brick	SS1
Single Old Englysh Cobblestone Brick	SC3
Single Lakeland Cobble Brick	SC2
Single London Cobble	SC1
Joint Texture Strip	M994

For our full range of patterned mats and borders, please see the PICS mat brochure.

**STAIN25 - STAINAB1**  
**Mahogany 25ltr / 5ltr / 1ltr**  
 To change concrete colour or create enhanced features by chemical staining.  
 (see colour chart for full range below)



## PICSTAIN Colours



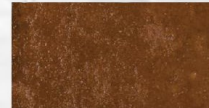
*Typical Grey Concrete*



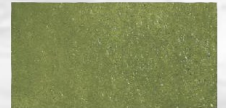
*Fern F5*



*Aqua Blue A5*



*Chestnut C5*



*Deep Green DG5*



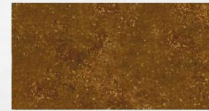
*Bronze B5*



*Mahogany M5*



*Terracotta T5*



*Burnt Orange BO5*



*Seal Brown SB5*

PICSTAIN is a blend of mineral salts in a mildly acidic solution which, when applied to concrete surfaces, react with free lime to form permanent coloured surfaces without risk of peeling or flaking.  
 PLEASE NOTE: The grey base colour is a typical concrete colour which, when stained produces the nine PICSTAIN colours as shown. Variations in the base colour will change resulting colour effects.

**HT5PL12**  
**Industry 12ltr Viton Sprayer Unit**  
 For spray application of acid stain.



**HT1052**  
**2" Brush**  
 For acid stain applications.



**STAINBRU**  
**Picstain Brush Set**  
 Artist brushes for accurate acid stain application.



**HT1054**  
**4" Brush**  
 For acid stain applications.



# 24 PICSEAL Driveway Refurbishment

**BS1 / BS2**  
**Picseal 25ltr / 5ltr**  
 Formulated to seal, protect & enhance all block paving installations.



**BS4**  
**Permaseal 25ltr**  
 A clear, UV light-stable solution designed to penetrate and stabilise the jointing sand of block paving and pre-cast flagstones.



**BPSAND**  
**Block Paving Sand**  
 Fine graded kiln dried sand for jointing block and other forms of paving.



**CM48A / CM48**  
**Cleaning Solvent / Thinners 25ltr / 5ltr**  
 For cleaning out sprayer units, cleaning spillages, stripping very small areas of sealer & colour washing.



**BSDG**  
**Degreaseant 5ltr**  
 Breaks down oil prior to removal from concrete & block paving.



**EFFLOR**  
**Efflorescence Remover 5ltr**  
 Removes efflorescence from newly laid block paving prior to sealing.



**FUNGI**  
**Fungicidal Wash 5ltr**  
 Removes fungal growth when maintaining existing paving.





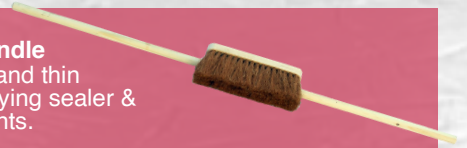
### MC25 / MC5 Mossclean 25ltr / 5ltr

The most effective way to kill moss and algae and will even remove the most stubborn black lichen spots from paving.



### HT104 & HT106 Sealing Broom & Handle

10" coco bristle head and thin broom handle for applying sealer & working sealer into joints.



### CODE PU20 / PU4 PU sealer 20kg / 4kg

Ready to apply moisture cured polyurethane coating. Designed to penetrate and stabilise the jointing sand and enhances the protected surface.



### HT5PL12 Industry 12ltr Viton Sprayer Unit

Viton seals equipped all-round. For sealer application.



### CM74 Block Paving Manhole Cover

Heavy duty block paving manhole cover. 600mm x 450mm x 80mm.



### HT520 10ltr Gloria Sprayer Unit (Viton)

Heavy duty, viton seals equipped all-round unit for sealer application.



### FUNNEL Heavy Duty Large Funnel

For ease of filling a sprayer unit & to avoid spillages.



# 26 PICSCOAT Ancillaries

**FUNGI**  
**Fungicidal Wash 5ltr**  
Removes fungal growth when maintaining existing paving.



**BSDG**  
**Degreaseant 5ltr**  
Breaks down oil prior to removal from concrete & block paving.



**MC25 / MC5**  
**Mossclean 25ltr / 5ltr**  
The most effective way to kill moss and algae. Mossclean will even remove the most stubborn black lichen spots from paving.



# PICSCOAT Consumables

**PC20 / PC5**  
**Picscoat Black 20ltr / 5ltr**  
Tarmac refurbishment coating.



**PC20RED / PC5RED**  
**Picscoat Red 20ltr / 5ltr**  
Tarmac refurbishment coating.




**PC20GRN / PC5GRN**  
**Picscoat Green 20ltr / 5ltr**  
Tarmac refurbishment coating.




**TPATCH25**  
**Black Tarmac Drive Repair 25kg**  
a perfect solution for cost effective repairs to Asphalt Driveways, Paths and Potholes. It is ready to use straight from the bag.




**HOMEAPP**  
**Homeowner Application Kit (With Handle)**  
 Roller, tray & handle for roller.



**ROLREF**  
**12" Roller**  
 Synthetic sheepskin roller for application of primer.



**HT362**  
**Mixing Paddle (Medium)**  
 For mixing the Picsoat product.




**WIREB**  
**Wire Brush**  
 For removing difficult algae, moss, roots and other stains.



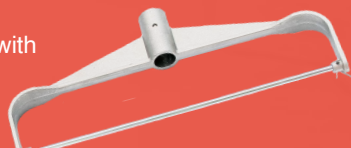
**ROLTRAY**  
**17" Roller Tray**  
 Large roller tray for ease of application of Picsoat.



**MASKING**  
**Masking Tape**  
 For masking off areas such as manhole covers prior to applications of Picsoat.



**ROLFRAM**  
**12" Roller Frame**  
 For use with 12" Roller. Use with thin handle 'HT104'




# 28 WALLCRETE Consumables

**WALLBOND25 / WALLBOND5**  
**PICS Primer 25ltr / 5ltr**  
 To facilitate a good bond between Wallcrete and the background to be coated.



**WLIQREL25 / WLIQREL5**  
**Wall Liquid Release Agent 25ltr / 5ltr**  
 To act as release agent when using wall imprinting mats.



**WALLCRETE-A - WALLCRETE-D**  
**Wallcrete**  
 User friendly, highly advanced lightweight render.



**WPIG307 - WPIG357**  
**Wallcrete Pigment**  
 For adding to Wallcrete product for integral colour. (For our full range of colours, please see PICS colour chart)



**WALLSEAL25 / WALLSEAL5**  
**Wall Seal 25ltr / 5ltr**  
 To protect the wall from the elements and enhance the colour.



**WDWATER/WDWATER5**  
**Wallcrete De-ionised Water 25ltr / 5ltr**  
 For diluting water based wall stain to required colour.



**WSTAIN940 / WSTAIN120**  
**Wall Stain 940ml / 120ml**  
 Can be sprayed over large areas. Use a paint brush or a sponge for features such as individual stones or cobbles. (For our full range of colours, please see PICS colour chart below)



## Wallcrete Stains & Dilution Rates

	5:1	6:1	7:1	8:1	9:1	10:1		5:1	6:1	7:1	8:1	9:1	10:1
Black							Ocean Blue						
Dark Chocolate							Desert Sand						
Antique Grey							Yellow Ochre						
Red							Yellow						
White							Nutmeg						

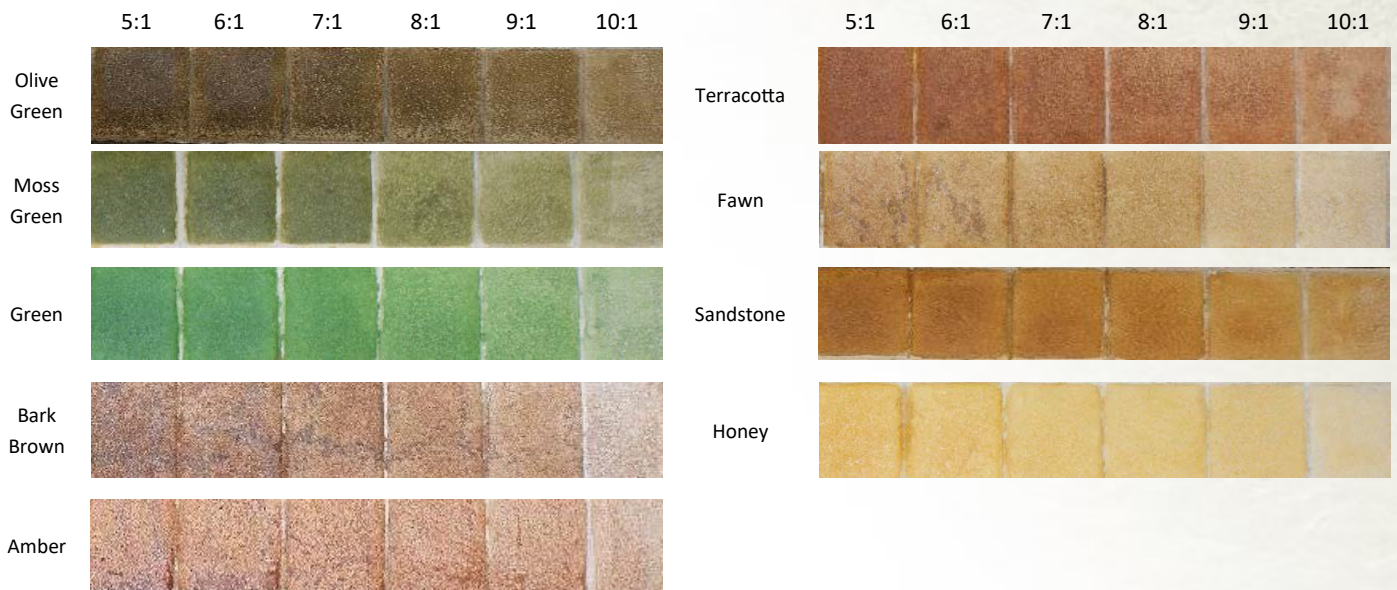
## IMPRINTING MATS

Deep Textured Dry Stack	WMS01
Southern Ledge Stone	WMS02
Mountain Dry Stack	WMS03
Ashlar Stone	WMS04
Old Cobblestone	WMS05
Random Stone	WMS06
Cobblestone	WMS07
Mediterranean	WMS08
Vineyard	WMS09
Castlestone	WMS10

## TEXTURED SKINS

Bath Stone Wall Mat 24" x 20"	WM130
Bath Stone Pancake 10" x 10"	WP130
Cotswold Stone Wall Mat 24" x 20"	WM132
Cotswold Stone Pancake 10" x 10"	WP132
York Stone Wall Mat 24" x 20"	WM199
York Stone Pancake 10" x 10"	WP199
Purbeck Stone Pancake 10" x 10"	WP200
French Granite Wall Mat 24" x 20"	WM210
French Granite Pancake 10" x 10"	WP210
Welsh Slate Wall Mat 24" x 20"	WM213
Welsh Slate Pancake 10" x 10"	WP213
Travertine Textured Skin 600mm x 600mm	WM214
Travertine Textured Skin 900mm x 900mm	WM215
Limestone Textured Skin 600mm x 600mm	WM216
Limestone Textured Skin 900mm x 900mm	WM217

### Wallcrete Stains & Dilution Rates



For our full range of patterned mats and borders, please see the PICS mat brochure.

# 30 WALLCRETE Tools

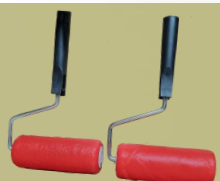
**HT362**  
**Mixing Paddle (Medium)**  
For mixing Wallcrete.



**HT362L**  
**Mixing Paddle (Large)**  
For mixing Wallcrete.



**WR130-WR216**  
**Wallcrete Textured Rollers**  
12" wide range of textured rollers to match the Wallcrete pancakes and textured skins.



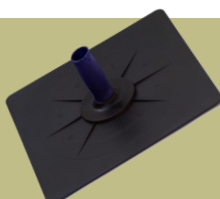
**WCT**  
**Wallcrete Carving Tool Set Light Duty**  
Complete set for removing squeeze ups and enhancing joints. (Pack of 6)



**WCTHD**  
**Wallcrete Heavy Duty Carving Tool**  
The must have carving tool for any Wallcrete installation.



**WHAWK**  
**Wallcrete 330 x 330 Hawk**  
For use when placing Wallcrete.



**WBCT**  
**Wallcrete Brick Carving Tool**  
For removing squeeze ups and enhancing joints with brick effect.



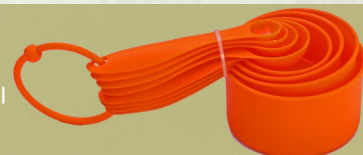
**WJUG1**  
**1ltr Measuring Jug**  
For the accurate measurement of Wallcrete products.



**WJUG2**  
**2ltr Measuring Jug**  
For the accurate measurement of Wallcrete products.



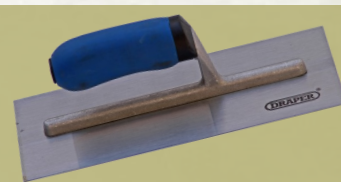
**WMCUP**  
**Measuring Cups**  
For measurement of the Wallcrete integral colour wall pigment.



**WSCRATCH**  
**Wallcrete Scratch Tool**  
To create a scratch coat.



**WTROW**  
**Wallcrete Trowel**  
For applying Wallcrete.



## NEWBURY HEAD OFFICE

Unit 4 Red Shute Hill Industrial Estate  
Hermitage  
Newbury  
RG18 9QL  
Tel: 01635 202224  
sales@picsuk.com  
Opening Hours: Mon-Fri 08:00-18:00



## NEWBURY DEPOT

Unit 2 Red Shute Hill Industrial Estate  
Hermitage  
Newbury  
RG18 9QL  
Tel: 01635 744431  
sales@picsuk.com  
Opening Hours: Mon-Fri 08:30-17:30



## SHEFFIELD DEPOT

Unit 4 Redwood Court  
Campbell Way, Dinnington  
Sheffield  
S25 3NQ  
Tel: 01909 568189  
pics.sheffield@picsuk.com  
Opening Hours: 07:30-17:00



## MANCHESTER DEPOT

Unit 7  
Wharfside Business Park  
Irlam Wharf Road, Irlam  
Manchester  
M44 5PN  
Tel: 0161 7757412  
pics.manchester@picsuk.com  
Opening Hours: 07:30-17:00



**PICS**

MARKETING

**PICS**

PAVE

**PICS**

ANCILLARIES

**PICS**

TOOLS

**PICS**

STAIN

**PICS**

SEAL

**PICS**

STONE

**PICS**

COAT

**PICS**

WALLCRETE



**PICS**

[www.picsuk.com](http://www.picsuk.com)

Unit 2 & 4 Red Shute Hill Industrial Estate

Hermitage

Newbury

RG18 9QL

Tel: 01635 202224

Email: [sales@picsuk.com](mailto:sales@picsuk.com) | Web: [www.picsuk.com](http://www.picsuk.com)



Colours and photography are shown as a guide only. As we are constantly improving our product range, we reserve the right to make changes without prior notice. These details do not form any contract and whilst every effort is made to ensure accuracy, this cannot be guaranteed. All pictures and text remain the property of PICS Ltd and should not be reproduced without our permission. Effective from January 2023.